

Office of Land Resources Update

49th Annual AEF Conference
Tori Gordon, Associate Director

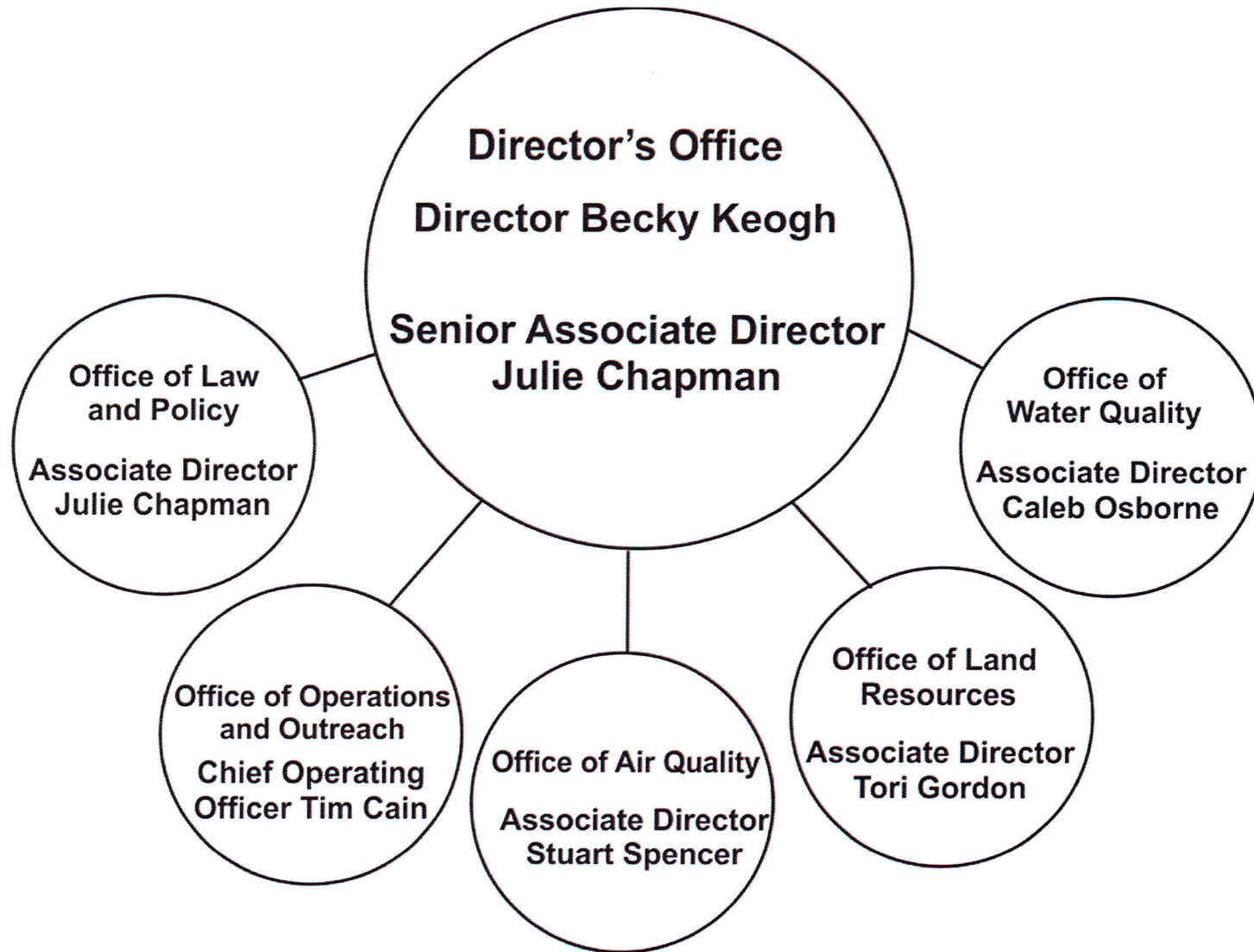
October 6, 2016



Agency-wide Reorganization

- Created the Director's Office, Office of Operations, Office of Law & Policy, Office of Air, Office of Water and Office of Land Resources
- Added to Leadership Team
- Increased Communication, Cooperation and Consistency

ADEQ Offices



Office of Land Resources

- Our core responsibilities are to:
 - Assure the proper handling, storage, treatment and disposal of solid and hazardous wastes;
 - Ensure proper operation and maintenance of UST systems;
 - Investigate, manage and remediate contaminated soil and groundwater; and
 - Regulate the mining of coal and other mineral resources.
- The OLR develops a more cohesive leadership team and greater opportunities for professional development, comprehensive planning & policy initiatives.



OLR Accomplishments

- Consistency in enforcement actions
- OSMRE reported that Arkansas is properly administering both the coal regulatory program and the abandoned mine land reclamation program.
- Leadership roles in ASTSWMO & ASWANA
- Implemented LEAN Management practices
- Multiple Brownfield completions
- Prepared design packages for NABORS & DAMCO
- Successfully amended Regs. 23 & 27



“The only thing that is constant is change.” -Heraclitus

ADEQ Divisions

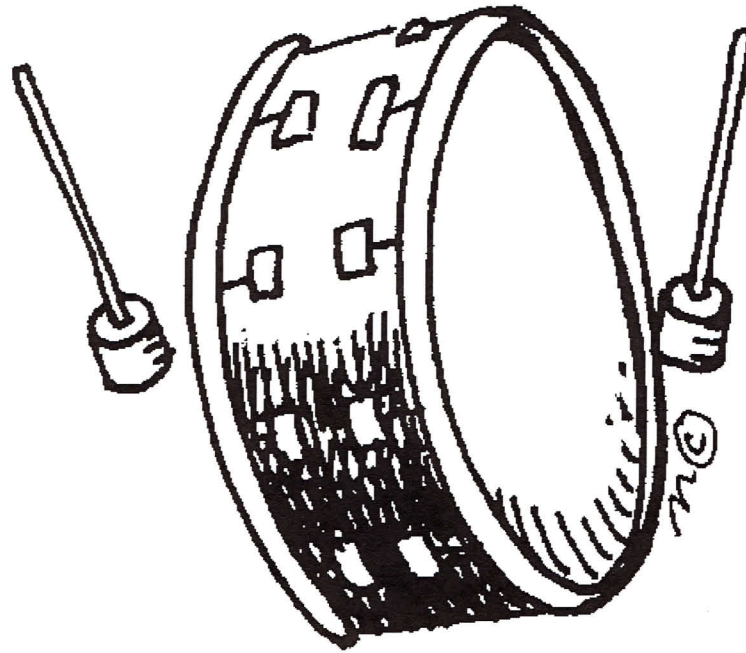
- Hazardous Waste
- Solid Waste Management
- Mining
- Regulated Storage Tanks



ADEQ OLR

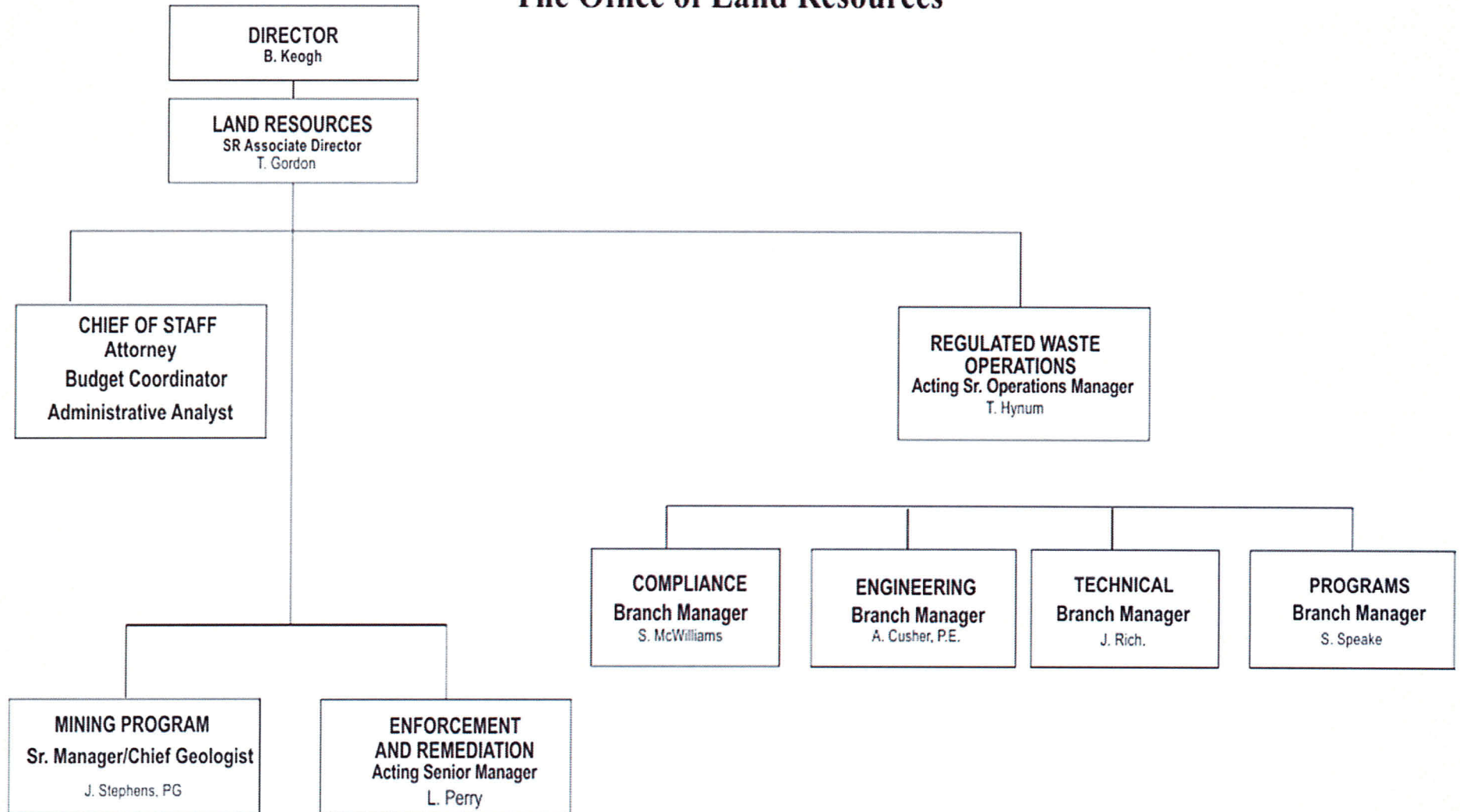
- Chief of Staff
- Regulated Waste Operations
- Mining
- Remediation & Enforcement

Drum Roll Please...

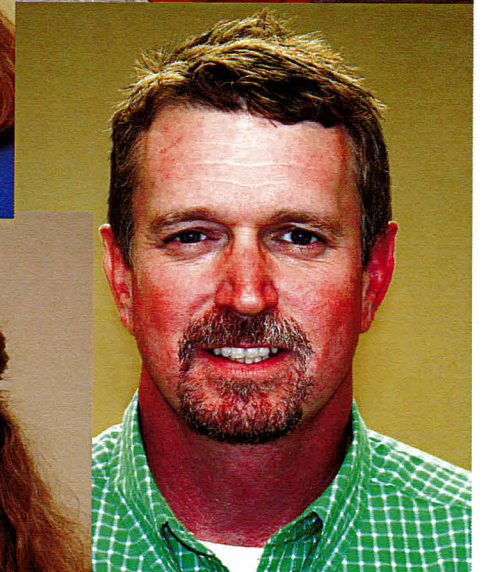
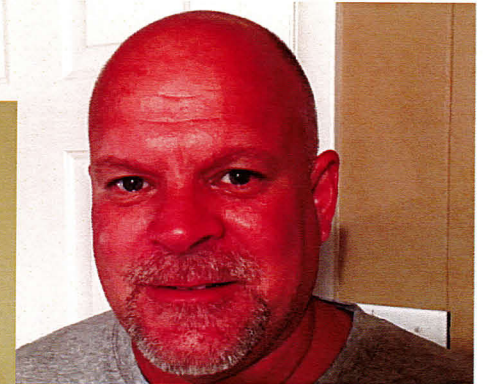


ARKANSAS DEPARTMENT OF ENVIRONMENTAL QUALITY

The Office of Land Resources



OLR Leadership Team

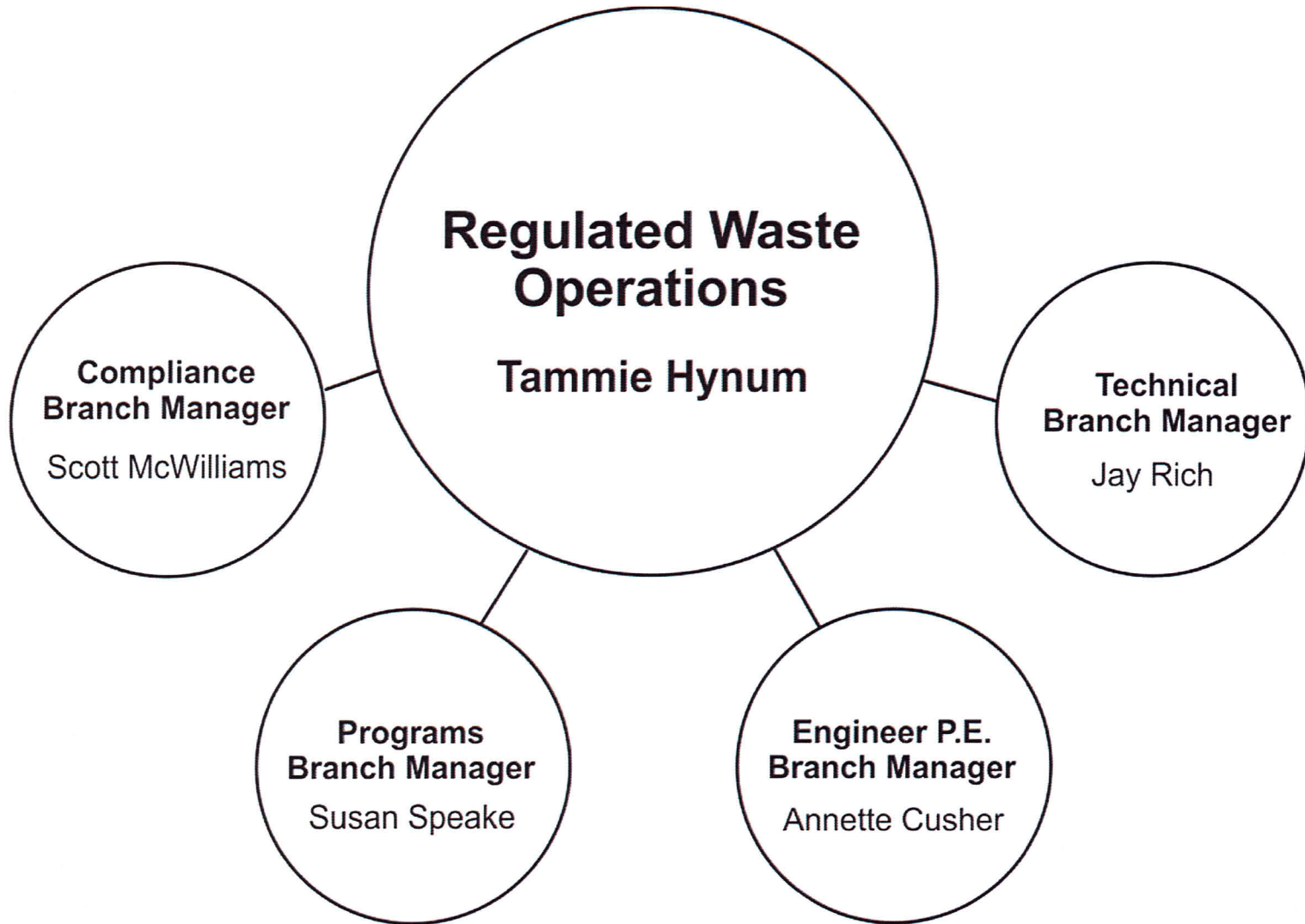


OLR Leadership Tammie Hynum

- Acting Senior Operations Manager for the OLR
- Lead technical staff member within the OLR
- Liaison to the regulated community

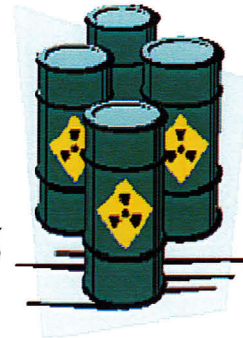


Reg. Waste Team



Regulated Waste Operations

- Compliance
 - Inspections for Solid Waste, Hazardous Waste, RSTs and Mining
- Engineering & Technical
 - HW Permits & Corrective Action
 - SW Permits & Corrective Action
- Programs
 - Waste Tires
 - Land Auditor
 - SW Operator Licensing



OLR Leadership

Jim Stephens

- Sr. Manager/Chief Geologist for the Mining Program
- Coal Programs
- Non-Coal Program



Mining

- ADEQ's Surface Mining and Reclamation Division regulates the mining of coal and other mineral resources to ensure that the environment isn't harmed during mining.
- It also works to ensure that mined properties are returned to beneficial use after operations shut down.



OLR Leadership

Lynda Perry

- Acting Sr. Manager for Remediation & Enforcement
- Oversees enforcement actions
- Will oversee State Program Approval Process (amended Federal UST rule)



Remediation & Enforcement

- National Priority List Sites
- State Priority List Sites
- Site Assessment & Brownfields
- Fund Management
- OLR Enforcement



Moving Forward...

- Submit State Program Approval to EPA
- DAMCO & NABORS Closure/Post-Closure
- Offer more educational outreach training to industry (SW/HW/Mining/RST)
- Waste Tire Legislation for 2017 Session
- Train new hires and cross-train existing employees
- Look for ways to enhance efficiency and effectiveness

Thank You!

**Tori Gordon, Associate Director
ADEQ Office of Land Resources**

gordont@adeq.state.ar.us

501-682-0962

